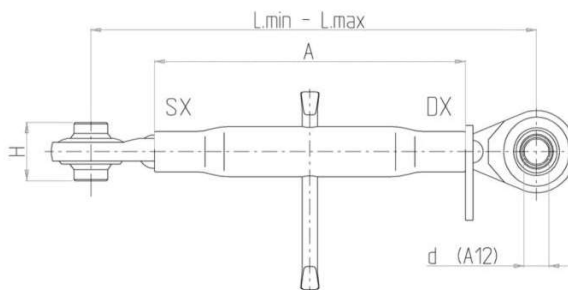


ADJUSTABLE TOP LINKS

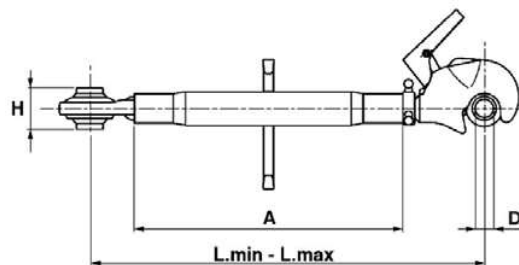
Adjustable Top Links with Ball Ends (mm)

Product Code	Cat	A	D	H	Min Length	Max Length
11047	1	320	19.2	44	430	640
19675	1	400	19.2	44	510	720
01119	1	570	19.2	44	680	890
11066	2	430	25.4	51	550	780
01916	2	500	25.4	51	620	850

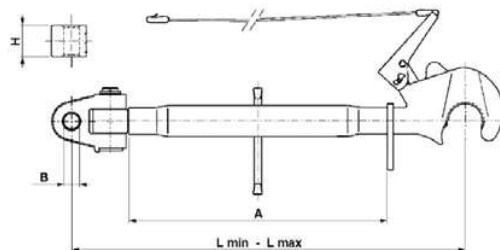
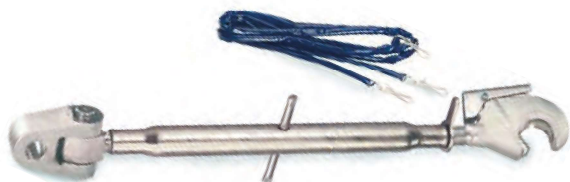


Adjustable Top Links with Quick Hitch (mm)

Product Code	Cat	A	D	H	Min Length	Max Length
10839	2	420	25.4	51	605	845

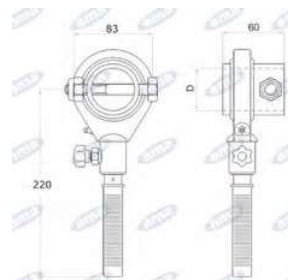


Product Code	Cat	A	D	H	Min Length	Max Length
10591	2	400	25.4	51	625	885
10592	3	400	32.1	51	625	885



Adjustable Top Link Ratchet Handle (mm)

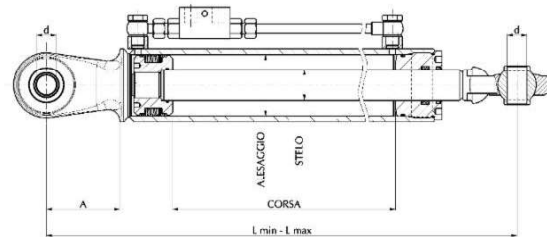
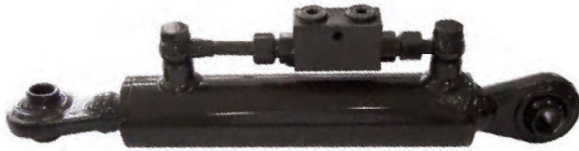
Product Code	Bore
88095	42
88096	48
88097	51



HYDRAULIC TOP LINKS

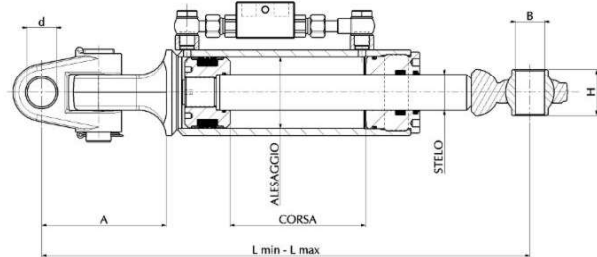
Ball Fitting at Both Ends (mm)

Product Code	Cat	Cylinder Bore	Road Diametre	Stroke	A	D	Min Length	Max Length
06003	1	50	30	210	60	19	460	670
06004	1	50	30	280	60	19	530	810
01597	1	50	30	280	65	25.4	550	830
11238	2	70	35	265	95	25.4	610	875



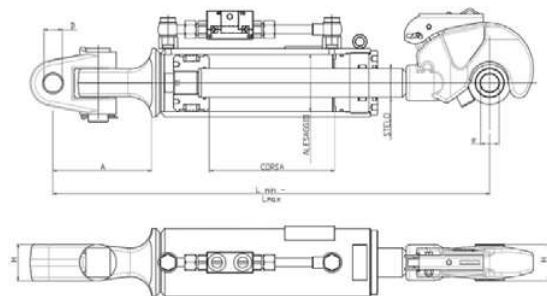
Ball and Cat 3 Knuckle End (mm)

Product Code	Cat	Cylinder Bore	Road Diametre	Stroke	B	D	Min Length	Max Length
81090	3	90	45	320	32	32	680	1000



Cat 3 Knuckle and Cat 3 Quick Hitch (mm)

Product Code	Cat	Cylinder Bore	Road Diametre	Stroke	A	D	E	H	Min Length	Max Length
36957	3	90	45	240	138	32	32	51	700	940



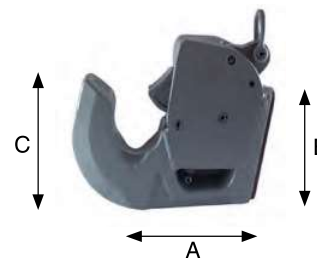
Tractor Remote Hose Kit (mm)

Product Code 04559 consists of 2 crimped hydraulic hoses with F90° + 3/8" nipple and male poppet quick coupling 1/2". Length is 900mm and is ready for connection, without the need for any other fittings.



QUICK HOOKS (mm)

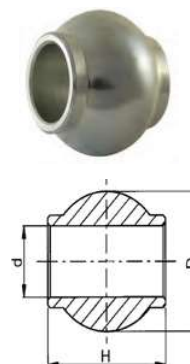
Product Code	Cat	A	B	C	Width	Diametre
95002	2	135	110	120	38	56
95003	3	135	110	142	40	64
95004	4	178	162	175	50	85



TOP AND LOWER LINK BALLS

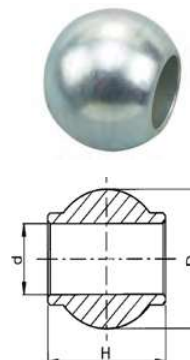
Top Link Rapid Balls (mm, kg)

Product Code	Cat	d	D	H	Weight
01504	2	25.4	50	51	0.34
05118	3/2	25.4	60	51	0.70
05130	3	32.1	60	51	0.58
76416	4/3	32.1	78	64	1.42
76417	4	45.2	78	64	1.05



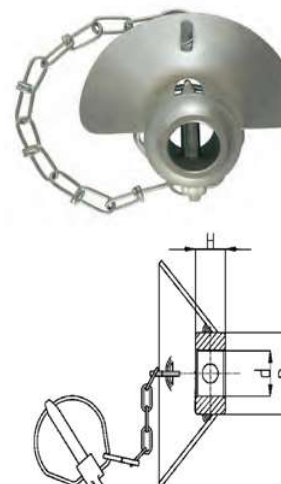
Lower Link Balls (mm, kg)

76399Product Code	Cat	d	D	H	Weight
01500	1	22.1	56	45	0.58
01501	2	28.2	56	45	0.46
01502	3/2	28.2	64	45	0.74
18872	3	37.1	64	45	0.56
93885	4/3	37.1	85	50	1.60
76399	4	51	85	57.5	1.22



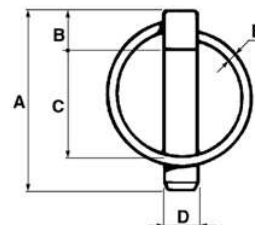
Assisted Lower Link Balls with Chain & Pin (mm, kg)

Product Code	Cat	d	D	H	Weight
01450	2	28.2	56	69	1.00
01451	3/2	28.2	64	72	1.27
01452	3	37.1	64	72	0.98



LINCH PINS (mm)

Product Code	D	C	B	A	E	Shaft Diametre
10524	4.5	29	9	45	2.5	from 10 to 15
10518	5	35	8.5	48	2.5	from 14 to 18
10519	6	36.5	8.5	55	3	from 18 to 22
10520	8	36.5	9	54	3	from 24 to 30
10521	9	36.5	11	55	3.5	from 26 to 32
10522	10	40	12	56	3.5	from 28 to 38
10523	11	40	11	56	3.5	from 30 to 38



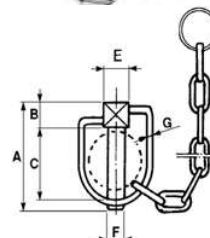
Assortment of Linch Pins

Product Code – 88047. Consists of 16 x Linch pins 4.5 x 36mm, 18 x Linch pins 6 x 45mm, 6 x Linch pins 8 x 45mm and 10 x Linch pins 11 x 45mm



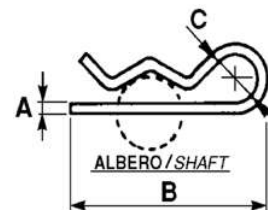
10mm Linch Pin & Chain (mm)

Product Code	F	C	B	A	E	Shaft Diametre
02165	10	42	12	57	12	from 26 to 32



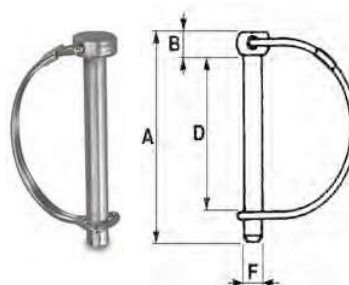
GRIP CLIPS (mm)

Product Code	A	B	C	Shaft Diametre
00679	1.8	35	6.5	from 6 to 8
00110	2	50	12	from 10 to 12
00111	2.5	58	14	from 11 to 13
00112	3	61	18	from 12 to 16
00113	3.5	80	18	from 15 to 21
00114	4	76	18	from 16 to 30
00116	5	100	24	from 20 to 35
00118	6	114	24	from 28 to 45
00143	8	162	42	from 45 to 60



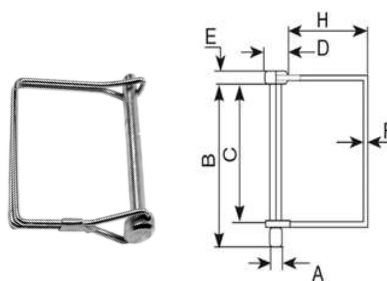
SHAFT LOCKING PINS (mm)

Product Code	F	D	A	B	Shaft Diametre
95050	6.5	55	76	6	from 35 to 50
01369	8	60	80	7	from 40 to 56
01370	10	60	80	10	from 40 to 56
91883	12	76	90	10	from 40 to 60



SHAFT LOCKING PINS SQUARE (mm)

Product Code	A	C	H	B	E	D	F
56741	6	56	43	70	6	12	2.5
56742	8	60	42	70	7	15	2.5
56743	9.5	57	43	67	9.5	18.5	2.5



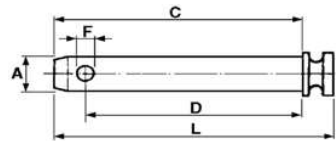
HOSE CLAMPS (mm)

Product Code	Diameter	Width
16331	8-16	9
16332	12-22	9
16333	16-27	9
16334	20-32	9
16335	25-40	9
16336	35-50	12
16337	40-60	12
16338	50-70	12
16339	60-80	12
16340	70-90	12
16341	80-100	12
16342	90-110	12



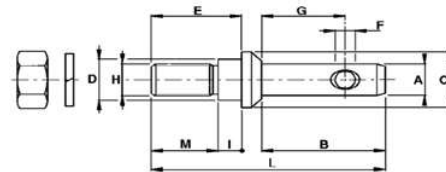
TOP LINK PIN (mm)

Product Code	Cat	A	D	C	F	L
1120640000	0	16	57.5	65	8	68
Al6831	0	16	78.5	86	5	105
04370	I	19	80	105	11.5	120
12419	I	19	76	95	12	113
03806	I	19	95	110	12	125
09072	I	19	103	120	12	138
01447	I	22	60	80	11.5	95
93946	I	22	125	118	11	137
1120670000		25	120	139.5	12	158.5
01399	II	28	57.5	80	11.5	95
09075	III	32	125	145	12	165



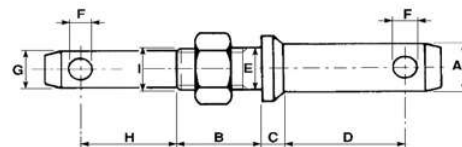
IMPLEMENT MOUNTING PIN (mm)

Product Code	A	D	H	G	M	F	B	E	I	L
09312	22	18	18x1.5	46	45	12	68	50	5	130
00040	22	22	22x1.5	50	40	12	74	54	14	140
92820	22	25	22x1.5	50	40	12	74	54	14	140
00036	22	28	22x1.5	50	40	12	74	54	14	140
00041	28	22	22x1.5	60	45	12	79	59	14	150
09314	28	24	24x1.5	55	45	12	78	60	15	150
09315	28	28	27x1.5	55	45	12	79	59	14	150



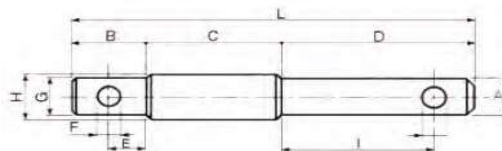
DOUBLE LINK PIN (mm)

Product Code	A	G	I	E	H	B	C	D	F
08019	28	22	24X2	25	48	42	12	58	12



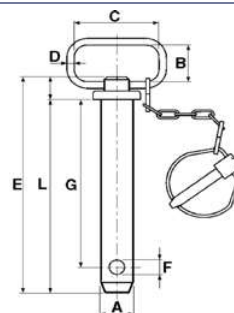
IMPLEMENT MOUNT PIN (19mm x 210 mm)

Product Code	A	G	H	L	B	C	D	I	E	F
01611	19	19	25	210	40	70	100	80	20	12



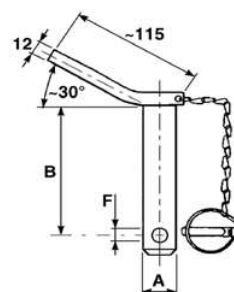
DRAW BAR PINS

Product Code	A	G	L	E	F	B	C	D
A3078	16	108	125	135	4.5	33	60	5
00001	19	110	125	145	8	33	68	9
00002	19	165	185	205	8	33	68	9
00003	22	165	185	205	10	33	68	9
00004	25	165	185	205	10	33	68	9
00093	28	120	140	160	10	33	68	9
00009	28	165	185	205	10	33	68	9
00005	32	165	180	200	10	33	68	9



PIN WITH HANDLE (mm)

Product Code	Cat	A	B	F
91729	III	36	175	12



RATED SHACKLES (D) (mm)

Product Code	Pin Size	Inner width	Length	Rating (tonne)
AS008	9.5	8	45	0.75
AS009	11	10	60	1
AS010	12.5	11	65	1.5
AS011	16	13	74	2
AS012	19	16	92	3.25
AS013	22	19	110	4.75
AS014	28	25	150	8.5



RATED SHACKLES (BOW) (mm)

Product Code	Pin Size	Inner width	Length	Rating (tonne)
AS015	9.5	8	54	0.75
AS016	11	10	65	1
AS017	13	11	72	1.5
AS018	16	13	84	2
AS019	19	16	105	3.25
AS020	22	19	123	4.75
AS021	28	25	130	8.5
AS022	25	22	155	6.5



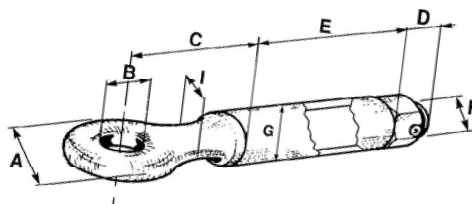
NON-RATED SHACKLES (mm)

Product Code	Pin Size	Length
AS001	6	36
AS002	7.5	46
AS003	9.5	56
AS004	11	74
AS005	15	95
AS006	19	115
AS007	24	145



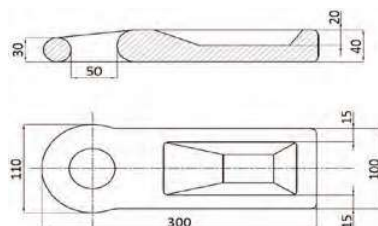
TOWING EYES (mm)

Product Code	A	B	C	D	E	F	G	Towable Max Load	Dynamic Load	Homologation
00576	104	45	96	24	150	M30	51	6T	1100daN	DGM-RA990E
00578	112	45	98	33	146.5	M33	63	12T	2090daN	DGM-RA987F



12" HITCH EYE (mm)

Product Code	A	B	C	D	E	G	H	L
10529	300	245	30	20	50	110	40	100



BALL JOINTS (mm)

Product Code	B	A	d	E	G	C	F	Series
04545	19.2	35	67	50	56	18	84	I
00190	22.1	35	65	43	50	14	73	I
0SR0515	25.4	35	76	50	70	18	88	II
00249	28.2	45	80	65	70	22	105	II
0SR0971	32.1	51	95	115	80	22	163	III
03803	35.1	45	108	65	80	22	119	III
03804	37.1	45	108	65	80	24	119	III

